

farmerswife

What's New 5.2

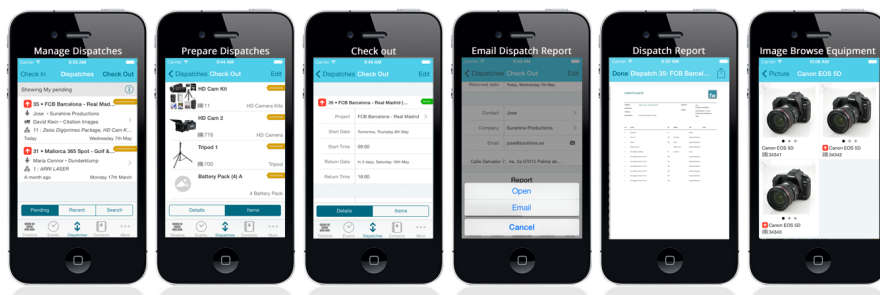
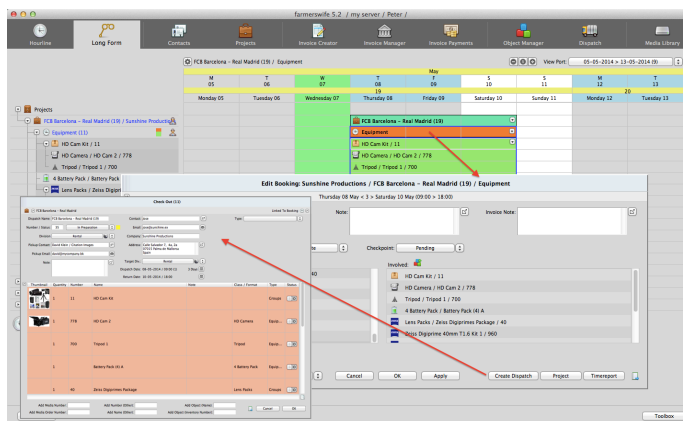
farmerswife 5.2 contains 281 native changes since the previous release of v5.1. Among these are 78 Features (21 Hot Features!), 22 Other changes and 175 Bug fixes.

More tracking, more dispatch

The new **Equipment Management and Tracking option [EMT]**, released with version 5.1, is adding functionality to the **Dispatch Module**, Object Manager and iOS app.

In 5.2 more columns and features have been added to the Object Manager for working with the Dispatch Module. Another main improvement is that you can now, from a Booking in farmerswife's timeline, with just one click create and link a Dispatch Check Out that will contain all booked 'Objects' or 'Groups' and their members.

And with the new "Allow Multiple Check Outs (Virtual Object)", available for Rooms, Machines, Others, Time Units and Groups, the Dispatch module can check out/in the same Object many times.



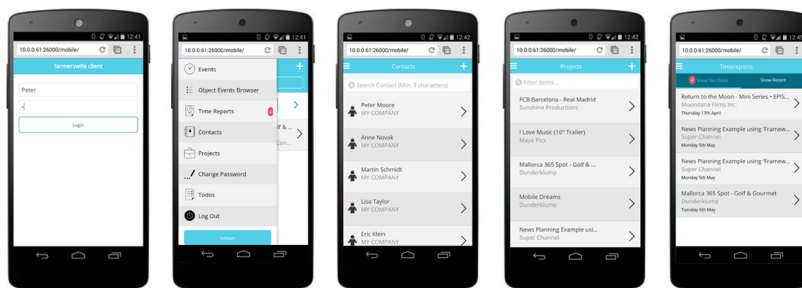
With the iOS app the EMT becomes light and easy to manage.

EMT is a separately purchased and licensed option. For more information and pricing please contact sales@farmerswife.com.

More Mobile Web Client

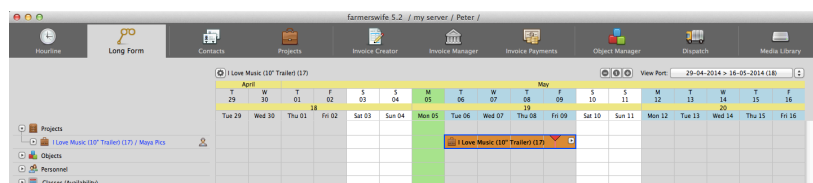
Major improvements have been added, to now bring similar functionality to the Mobile Web Client as seen in our existing Web Client and iOS platforms.

Users can access Events, Time Reports, To Do's, Contacts, and Projects and edit all of them (Permission based).



Feel secure

Implemented new Server/Client communication protocol using keep-alive connections for improved performance and SSL for improved security when used via the Internet.



Feel the ease of use

An eye catcher in 5.2 is the new Module Bar in the desktop application. We moved the most used Modules previously located in the 'Menu' into your plain sight.

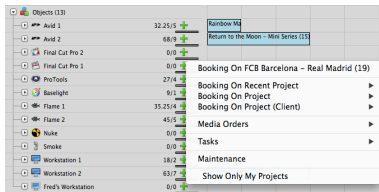
Also while using the "Long Form" you can now easily navigate to the next month/period by using the keyboard arrow keys (ALT + Arrow keys), so the Long-Form-timeline moves across for the chosen time range (jump by month, 2 week period, 5 week period etc.).



For those working with bigger screens we've added functionality for the Hourline to increase the text font size.

Color your day

In addition to the various coloring options you can now also color Bookings according to their Booking Name, which provides an even broader range of options to color the time lines in the Desktop client.



Faster Bookings

Added a "plus" icon on each drawn Object in the Object Tree to fast create a new Booking for that Object; a calendar will appear with a start and a stop date.

And with the new "Multiple Selection Calendar" functionality to the Repeat Booking feature you can multi-select days and the Booking will be repeated on those days.

Not to forget

As another addition to the various notification options in farmerswife, we now added a Confirmed Booking Start and End Reminder, which can be configured through the user's Web Permission Profile. Users will be reminded via email or iOS push notification about Events.

Projects and Expenses

Among other improvements on Projects when using "New From" the Project Rate Card is now copied across. And also the new Project is attached to the source's Container if this is used. **Project Expenses** can now have negative Buy Rates and the Project Expense import can now be done through a 'watch folder', getting your Expenses into the Projects in a fast and easy way.

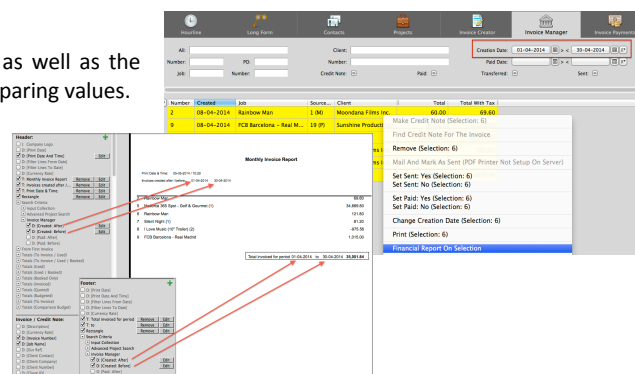
Reports, Reports

String Operators can now include fields from any parent section as well as the current one. This allows more complex reports and flexibility in comparing values.

A couple of new fields have been added to the **Financial Report Designer Header** section if grouping by "Invoice", so the fields can be repeated and shown on each page at the top.

The Header also contains a few basic "Search Criteria" filter values (showing a date range you filtered in Advanced Searches etc.). This allows you to display the reports conditions in the Header section.

Further fields have also been added to other Groupings; for full details please refer to the detailed release notes.



Working with Budgets... I wish I could...

... use Undo (and then Redo). Now you can either by pressing the "Tools" menu at the top or by using the platform specific keyboard shortcuts. In addition to the Undo if you select one or more Budget Details, you can now right-click and select "Cut" or "Copy" from the menu. Or just press Command-x/Command-c if you are on Mac, or Control-x/Control-c if you're on Windows. This will place the selected Budget Details in an internal clipboard.



And a new "Comparison Budget" option will allow you to compare two Budgets within one report line by line.

It's play time

farmerswife **play** is our add-on media collaboration tool that enables postproduction companies to easily and securely store and share media with their advertising and production clients. **play** allows users to encode, share and collaborate on dailies and masters, while keeping the raw high quality media material stored securely at the Post House.

In 5.2 we've added another major batch of improvements such as being able to **download files** that are located on Amazon S3 directly from the farmerswife client application. And to make managing your settings more easy, we've also implemented **batch editing of almost all Share related settings** from the Play Share Manager and other places.

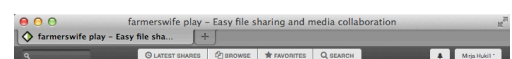
farmerswife **play** is a separate licenced option. For more information and pricing please contact sales@farmerswife.com

Dubs and co.

In Toolbox > Media Orders there is a new "Done / Total" column and you can also display any Media Order Custom Field within it's own column. Additionally you can now edit Custom Field values for multiple Media Entries in one go in the Media Library.

Need help?

The Mac Client application now has a "Help" menu, with direct links to some of our manuals.



farmerswife

